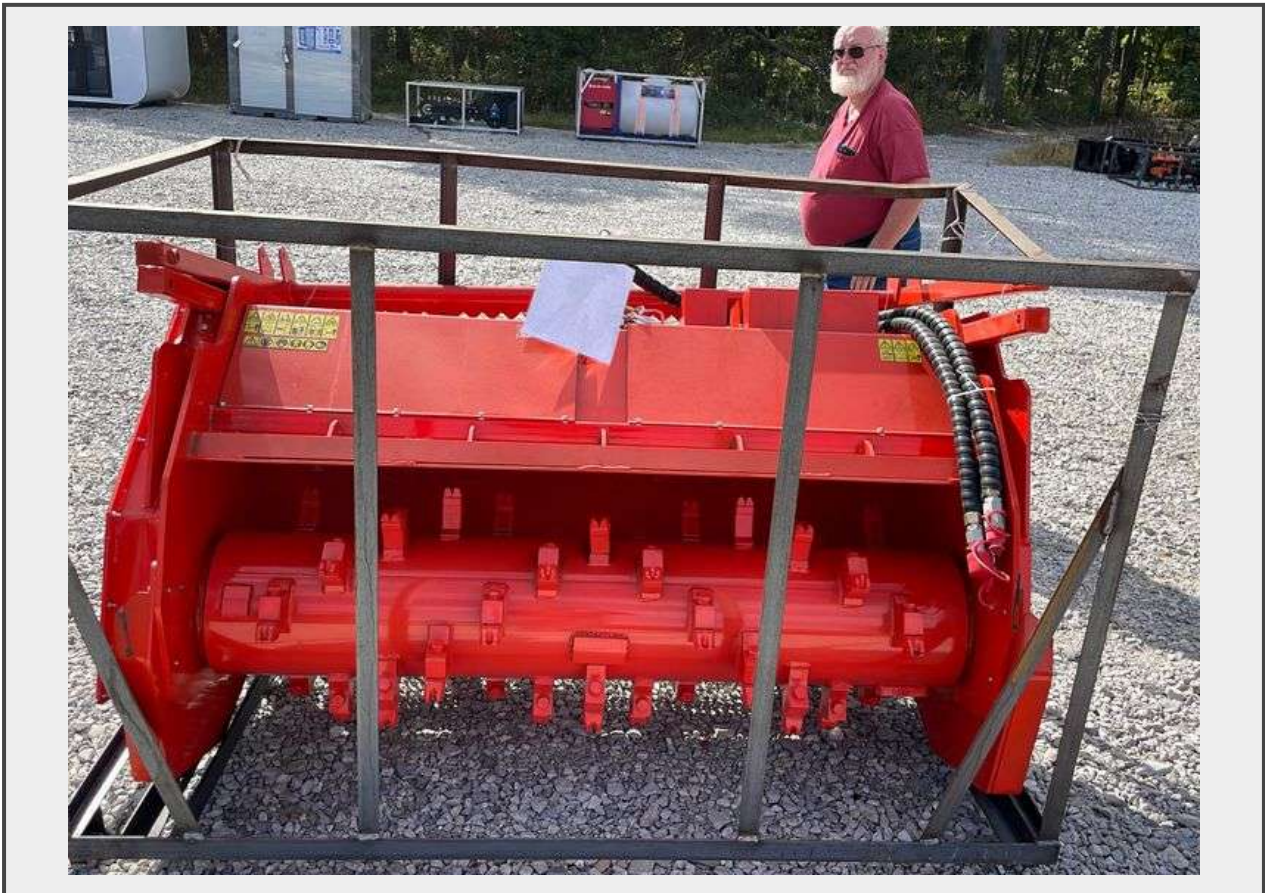


Sale Name: November 2024 Machinery & Equipment Online Auction

LOT 347 - Unused AGT Skid Steer Standard Flow Forestry Drum Mulcher, Triple helix claw teeth layout for hardwood, stumps, and branches, Heat-treated, bolt-on forged alloy teeth, Hydraulic axial piston motor and synchronous belt drive system, Pressure gauge, radiator, and independent cooling system, Oil bath lubrication bearing system, Sealed transmission chamber to protect belts, pulleys, and key components, Rear chain safeguard, Hydraulic hoses and ½" flat-faced couplers, Manually adjustable push bar, Product height: 66" (w/push bar), 43" (w/o push bar), Minimum loader power required: 75HP, Cut width: 63", Cut capacity: 8" diameter, Rotor diameter: 12" (w/o teeth), 24" (w/teeth), Flow range: 24-32 GPM, Maximum pressure: 3045 psi, Cut depth: 4.0", Mulching teeth: 40



Description

Unused Skid Steer Standard Flow Forestry Drum Mulcher

- Triple helix claw teeth layout for hardwood, stumps, and branches
- Heat-treated, bolt-on forged alloy teeth
- Hydraulic axial piston motor and synchronous belt drive system
- Pressure gauge, radiator, and independent cooling system
- Oil bath lubrication bearing system
- Sealed transmission chamber to protect belts, pulleys, and key components
- Rear chain safeguard
- Hydraulic hoses and ½" flat-faced couplers
- Manually adjustable push bar
- Product height: 66" (w/push bar), 43" (w/o push bar)
- Minimum loader power required: 75HP
- Cut width: 63"

- Cut capacity: 8" diameter
- Rotor diameter: 12" (w/o teeth), 24" (w/teeth)
- Flow range: 24-32 GPM
- Maximum pressure: 3045 psi
- Cut depth: 4.0"
- Mulching teeth: 40

Quantity: 1



<https://www.langhamauctioneers.com/>